

SHINTOTEX®

ADVANCED SYNTHETIC FIBRES

SHINTOTEX® es la nueva fibra sintética para muebles de exterior, inspirada en la naturaleza y perfeccionada técnicamente hasta alcanzar el máximo nivel de confort, funcionalidad y durabilidad. El shintotex está compuesto por PP y PE mas componentes catalizadores como filtros UV, pigmentos, aditivos anti-estáticos, y elementos plastificantes.

CARACTERÍSTICAS TÉCNICAS:

- Resistencia a cambios climatológicos • Resistencia a agentes químicos abrasivos • Resistencia a rotura y deterioro por el uso • Alta flexibilidad • Total reciclaje

CARACTERÍSTICAS ESTÉTICAS:

- Calidez y apariencia natural • Tacto agradable • Variedad de texturas y trenzados • Fácil limpieza • Mayor ligereza

SHINTOTEX® is a new synthetic fibre for outdoor furniture, inspired by nature and perfected by technology to achieve maximum comfort, functionality and durability.

The Shintotex is made of PP and PE, as well as catalysts, such as UV filters, pigments, additives, anti-statics and plasticisers.

TECHNICAL FEATURES:

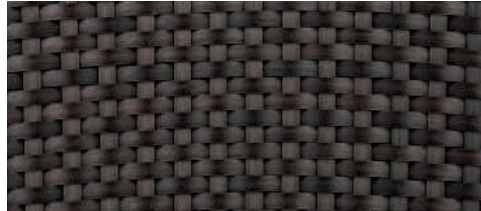
- Resistant to weather changes • Resistant to abrasive chemical agents • Resistant to breakage and wear & tear • Highly flexible • Fully recyclable

AESTHETICAL FEATURES:

- Warmth and nature appearance • Pleasant to the touch • Variety of textures and braids • Easy to clean • Lighter



marfil 36 / ivory 36 flat 9 mm



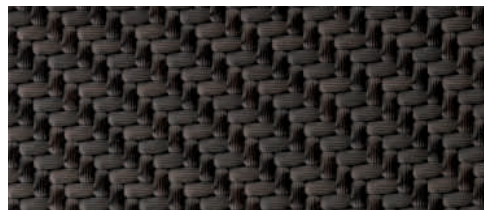
dark 59 flat 9 mm



marfil 36 / ivory 36 flat oval 6 mm



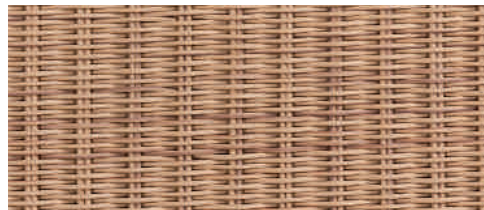
tostado 03 / toasted 03 flat oval 6 mm



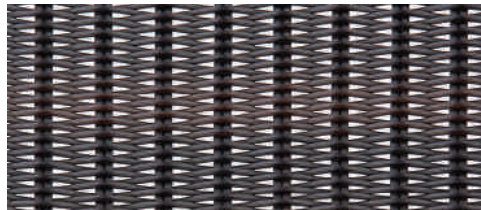
dark 59 flat oval 6 mm



marfil 36 / ivory 36 round 3-4 mm



tostado 03 / toasted 03 round 3-4 mm



dark 59 round 3-4 mm

MANTENIMIENTO Y LIMPIEZA

Pasar cepillo de cerdas suaves sobre el tejido para eliminar el polvo, o utilizar solución jabonosa de PH neutro para la limpieza de residuos o manchas.

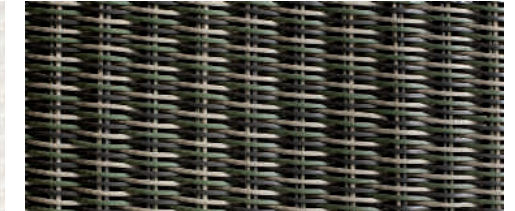
Evitar el contacto con productos abrasivos (lejías, cloro, aceites, productos con ácidos o sustancias corrosivas en su composición.)

Use a brush of smooth bristles in order to eliminate the dust from the weaving. Also, a soapy solution of neutral PH can be used to clean residues or spots.

Avoid contact with abrasive products (bleach, chlorine, oils, any product including corrosive acids or substances in its composition).



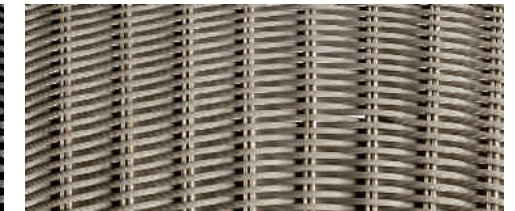
blanco 35 / white 35 flat 7 mm



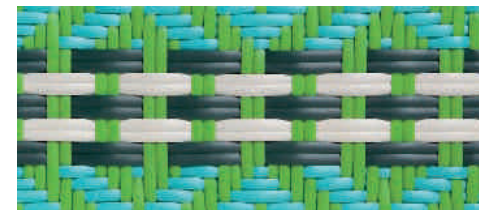
multicolor 10 3-4mm



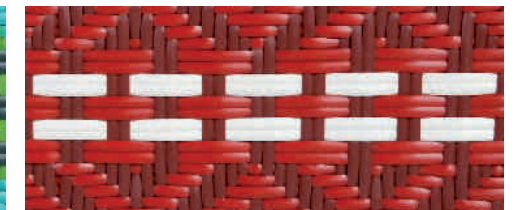
gris umbra 12 / umbra grey 12 round 3mm



gris claro 11 / light grey 11 round 3mm



verde icpalli / green icpalli 09 flat 7 mm



rojo icpalli / red icpalli 08 flat 7 mm



caleta 36 flat 30 mm